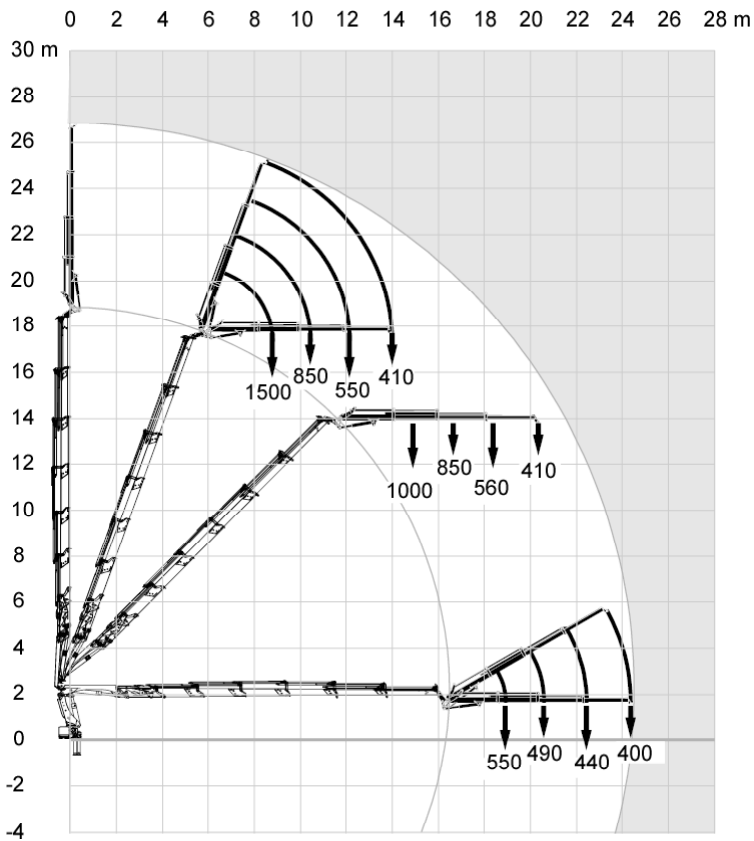


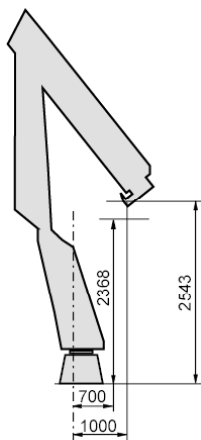
**Load Diagram**



**Capacity and performance**

|   |                      |
|---|----------------------|
| Lifting capacity with ADC                               | 245.3 (kNm)          |
| Lifting capacity  | 228.5 (kNm)          |
| Standard lifting capacity at standard outreach with ADC | 2.6 (m) - 9400 (kg)  |
|   | 4.5 (m) - 5500 (kg)  |
|   | 6.1 (m) - 3900 (kg)  |
|   | 7.9 (m) - 2840 (kg)  |
|   | 9.8 (m) - 2180 (kg)  |
|   | 11.8 (m) - 1740 (kg) |
|   | 13.9 (m) - 1420 (kg) |
|   | 16.1 (m) - 1220 (kg) |
| Standard lifting capacity at standard outreach          | 2.6 (m) - 8800 (kg)  |
|   | 4.5 (m) - 5200 (kg)  |
|   | 6.1 (m) - 3600 (kg)  |
|   | 7.9 (m) - 2620 (kg)  |
|   | 9.8 (m) - 2000 (kg)  |
|   | 11.8 (m) - 1580 (kg) |
|   | 13.9 (m) - 1300 (kg) |
|   | 16.1 (m) - 1100 (kg) |
| Manual lifting capacity at extension                    | 18.3 (m) - 980 (kg)  |
|   | 20.4 (m) - 840 (kg)  |
| Heavy lift capacity at heavy lift outreach              | 2.2 (m) - 10900 (kg) |
| Hydraulic boom extension                                | 11.7 (m)             |
| Manual max outreach                                     | 23.3 (m)             |
| Lifting height above installation level hydraulic       | 18.8 (m)             |
| Lifting height above installation level manual          | 23.1 (m)             |
| Slewing torque  | 34 (kNm)             |
| V80 Slewing speed                                       | 15 (°/s)             |
| Slewing angle   | 420 (°)              |
| Lifting speed   | 2.1 m/s              |
| Jib hydraulic outreach                                  | 24.7 (m)             |
| Jib standard lifting capacity at standard extension     | 19.2 (m) - 540 (kg)  |
|   | 20.8 (m) - 480 (kg)  |
|   | 22.7 (m) - 430 (kg)  |
|   | 24.6 (m) - 390 (kg)  |

**Side View Unfolded Close in Area**



**Functional demands**

|                                   |             |
|-----------------------------------|-------------|
| Recommended oil flow low          | 90 (l/min)  |
| Recommended oil flow high         | 120 (l/min) |
| Working pressure                  | 34 (MPa)    |
| Max slope viable at full capacity | 5 (°)       |

**Weights and measurements**

|                              |           |
|------------------------------|-----------|
| Height in folded position    | 2633 (mm) |
| Width in folded position     | 2500 (mm) |
| Installation space needed    | 1215 (mm) |
| Weight of crane              | 4020 (kg) |
| Weight support leg equipment | 402 (kg)  |
| Weight of crane with Jib     | 4020 (kg) |